



MINNESOTA'S PRIVATE COLLEGES  
COUNCIL • FUND • RESEARCH FOUNDATION

*Providing a Tradition of Quality  
for a Changing World,  
One Student at a Time*

---

## Graduation Rate Report 2009

Minnesota's Private Colleges have long been leaders in graduating students in four years. Our 17 member institutions have a combined four-year graduation rate of 66%, compared to 36% at the University of Minnesota and 20% at the Minnesota State Colleges and Universities (MnSCU). These rates are calculated for full-time, first-time students, using the most current data available. See the attached graphs for details.

It is worth noting that the private institutions' four-year graduation rate is higher even than the six-year graduation rate measures for the state's public systems. The private institutions' graduation rate has remained over sixty percent for the past several years and recently has risen higher. Also, our graduation rate for students of color is the highest in the state, with 56% graduating in four years compared to 27% at the University of Minnesota and 9% at MnSCU.

Timely graduation is an important indicator of effective institutional management; as noted by the Minnesota Office of Higher Education, graduation rates are used to measure institutional success. Higher graduation rates may be an indication of appropriately targeted student recruitment, effective campus communication, strong advising and accessible student support services. However, institutional management is not the only factor in graduating students in four years. The academic preparation of students, colleges' admissions selectivity and student demographics also influence graduation rates.

For students themselves, graduating in four years can minimize costs associated with additional tuition and any borrowing-related expenses. Students who remain in college more than four years also defer post-baccalaureate income earning, which their earlier-graduating peers are able to secure.

---

Augsburg College  
Bethany Lutheran College  
Bethel University  
Carleton College  
College of Saint Benedict  
College of St. Scholastica  
Concordia College, Moorhead  
Concordia University, St. Paul  
Gustavus Adolphus College  
Hamline University  
Macalester College  
Minneapolis College of  
Art and Design  
Saint John's University  
Saint Mary's University  
of Minnesota  
St. Catherine University  
St. Olaf College  
University of St. Thomas

---

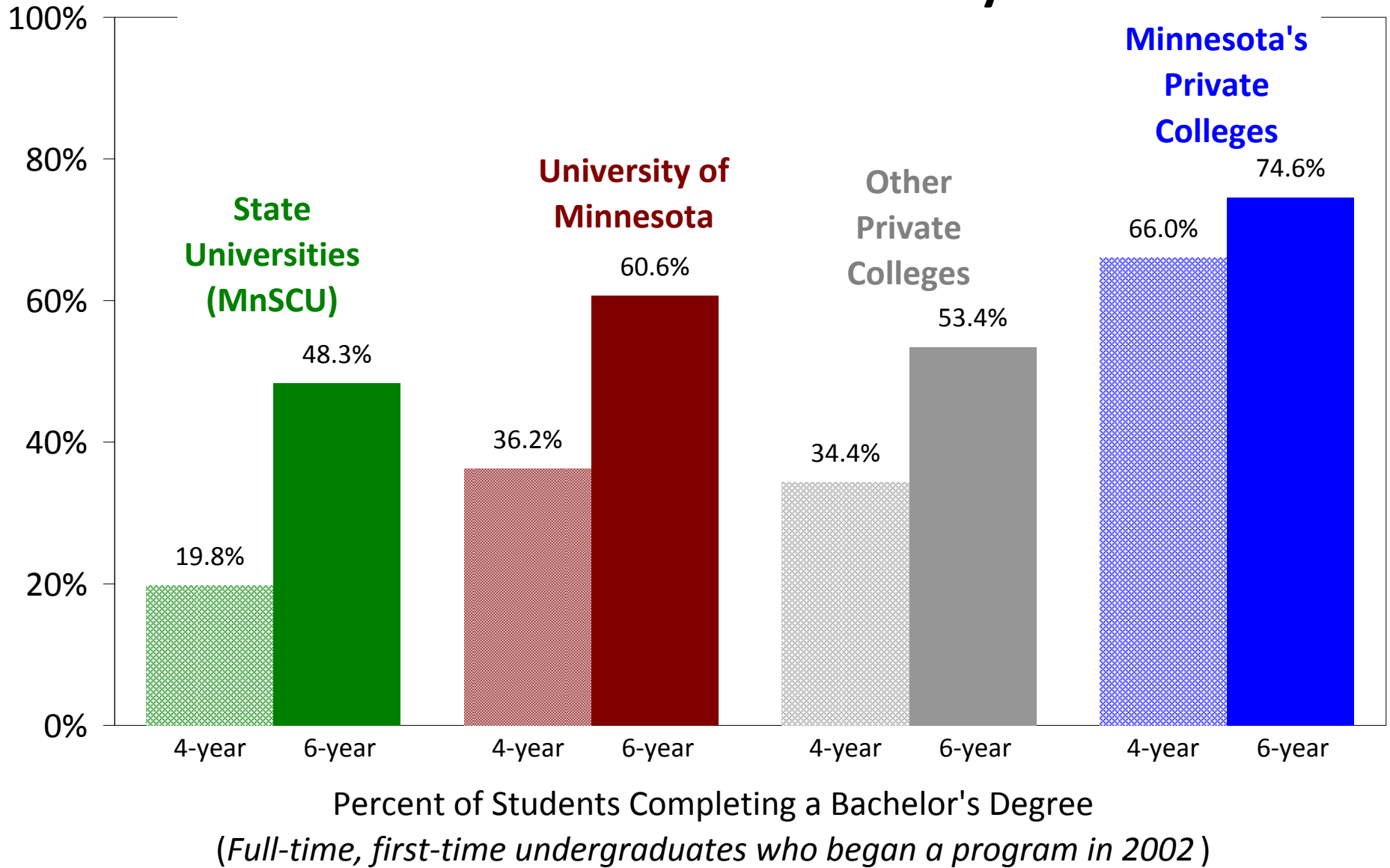
Bremer Tower  
445 Minnesota Street, Suite 500  
St. Paul, MN 55101

Phone: (651) 228-9061  
Fax: (651) 228-0379

[colleges@mnprivatecolleges.org](mailto:colleges@mnprivatecolleges.org)  
[www.mnprivatecolleges.org](http://www.mnprivatecolleges.org)

---

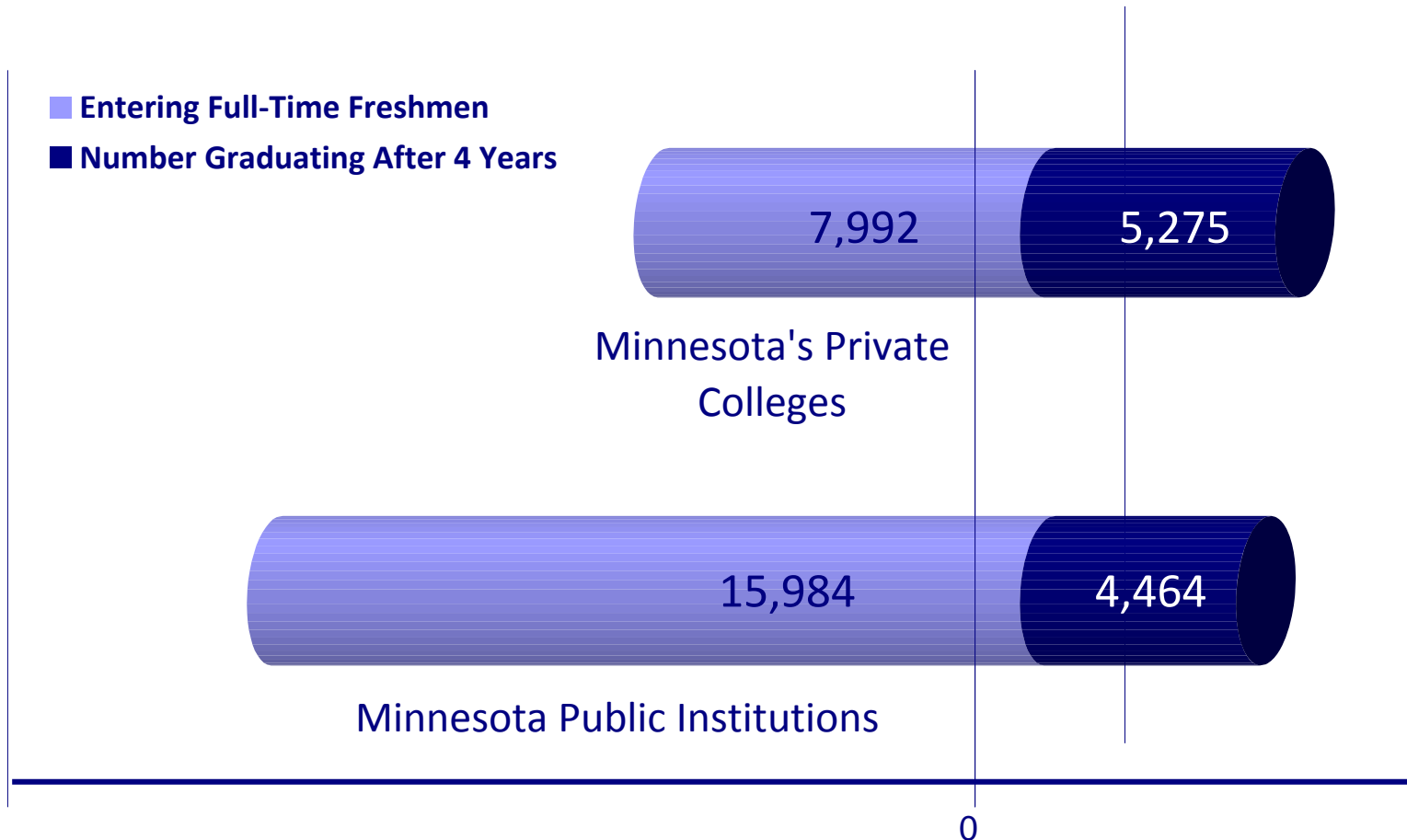
# Graduation Rates of Minnesota Institutions by Sector



Source: U.S. Department of Education, IPEDS

Analysis: Minnesota Private College Research Foundation, November 2009

# Minnesota Higher Education Pipeline: 4-Year Graduation Productivity (Cohort Year 2002)



Source: U.S. Department of Education, IPEDS 2002 Cohort.  
Analysis: Minnesota Private College Research Foundation

## 2008-09 Minnesota Postsecondary Graduation Rates by Sector by Race (2002 Cohort)

		Grand Total	White, non-Hispanic	All Students of Color	Black, non-Hispanic	Hispanic	Asian or Pacific Islander	American Indian or Alaskan Native
Minnesota's Private Colleges (MPCC)	Bachelor's or equivalent adjusted cohort	7,992	6,878	672	162	135	339	36
	4 year graduation	66.0%	68.3%	56.1%	39.7%	56.7%	64.7%	46.9%
	5 year graduation	73.4%	75.7%	65.3%	50.3%	67.7%	72.2%	59.4%
	6 year graduation	74.6%	76.9%	66.9%	51.7%	67.7%	74.4%	62.5%
Minnesota State Universities	Bachelor's or equivalent adjusted cohort	8,079	5,693	378	124	55	138	61
	4 year graduation	19.8%	20.1%	9.0%	5.6%	10.9%	13.0%	4.9%
	5 year graduation	42.4%	43.9%	28.6%	25.8%	34.5%	34.1%	16.4%
	6 year graduation	48.3%	50.2%	33.3%	31.5%	36.4%	40.6%	18.0%
University of Minnesota	Bachelor's or equivalent adjusted cohort	7,905	6,602	1,149	291	148	629	81
	4 year graduation	36.2%	37.9%	27.1%	21.0%	26.4%	31.2%	18.5%
	5 year graduation	56.0%	57.7%	46.6%	36.8%	48.0%	52.5%	33.3%
	6 year graduation	60.6%	62.1%	52.6%	43.3%	54.1%	58.5%	37.0%
Other Private not-for-profit Colleges	Bachelor's or equivalent adjusted cohort	1,074	992	65	14	16	28	7
	4 year graduation	34.4%	35.5%	21.5%	21.4%	18.8%	21.4%	28.6%
	5 year graduation	49.7%	51.1%	33.8%	35.7%	43.8%	28.6%	28.6%
	6 year graduation	53.4%	54.9%	35.4%	35.7%	43.8%	32.1%	28.6%
Private for-profit Colleges	Bachelor's or equivalent adjusted cohort	182	43	24	13	3	8	0
	4 year graduation	26.9%	27.9%	8.3%	7.7%	33.3%	0.0%	na
	5 year graduation	37.9%	51.2%	12.5%	15.4%	33.3%	0.0%	na
	6 year graduation	40.1%	60.5%	16.7%	15.4%	33.3%	12.5%	na
Grand Total	Bachelor's or equivalent adjusted cohort	23,919	19,014	2,235	593	349	1,112	181
	4 year graduation	40.3%	41.5%	31.7%	22.3%	34.7%	37.8%	19.3%
	5 year graduation	56.7%	58.6%	48.0%	37.4%	52.7%	54.7%	32.0%
	6 year graduation	60.7%	62.6%	52.4%	42.2%	55.6%	59.7%	34.8%

# Graduation Rates by Minnesota Institutions

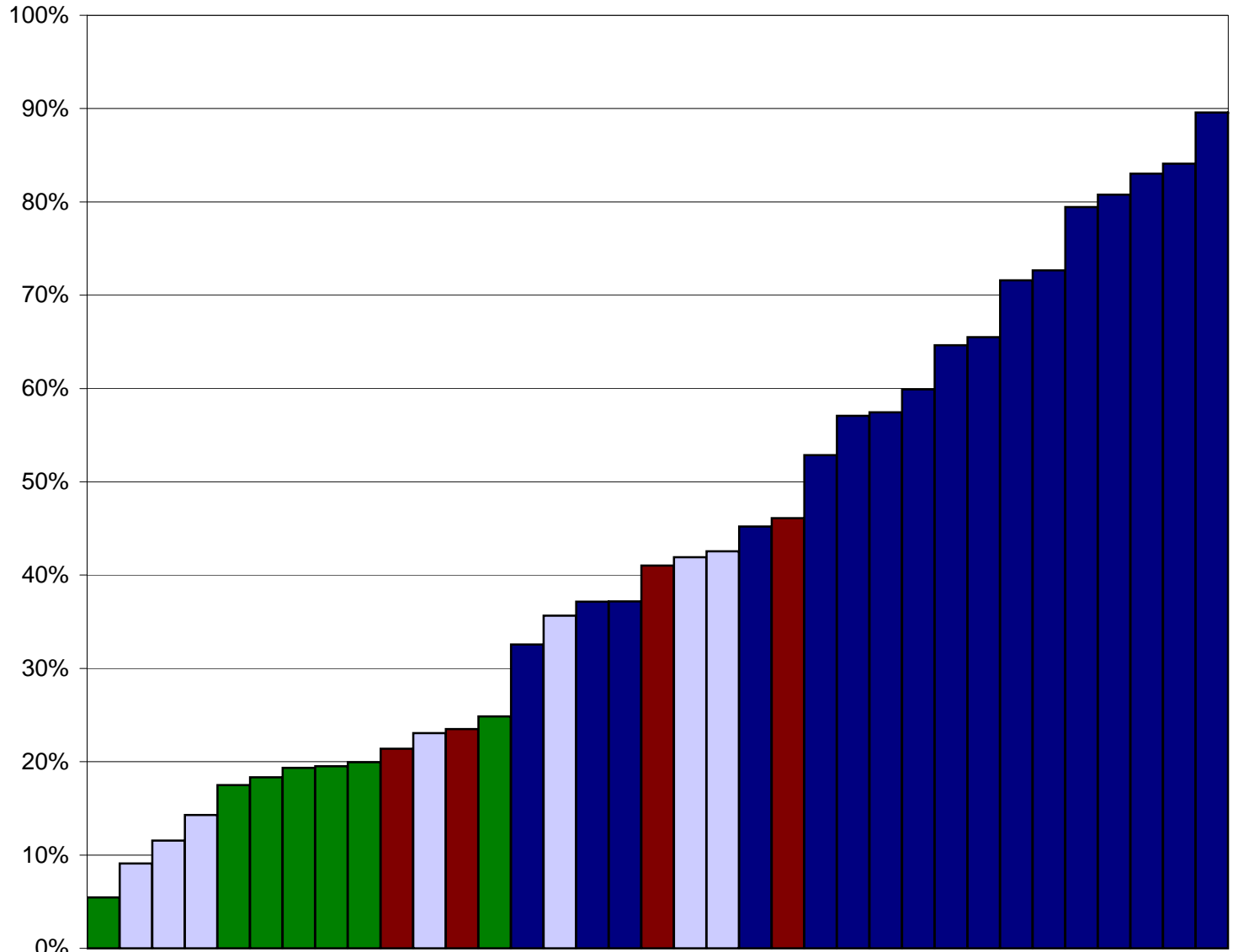
*Percent of Students Completing a Bachelor's Degree in Four Years*

**Minnesota's Private Colleges**  
**(17 MPCC Member institutions)**  
 66% of students complete their BAs in 4 years

**University of Minnesota**  
**(4 Institutions)**  
 36% of students complete their BAs in 4 years

**Other Private Not-For-Profits**  
 34% of students complete their BAs in 4 years

**State Universities**  
**(7 MnSCU Institutions)**  
 20% of students complete their BAs in 4 years



**Institutions**

Source: U.S. Department of Education, IPEDS 2002 Cohort  
 Analysis: Minnesota Private College Research Foundation, November 2009



2008-09 Minnesota Postsecondary Graduation Rates by Institution by Sector by Race (2002 Cohort)

Institution	Cohort	Grand Total	White, non-Hispanic	All Students of Color	Black, non-Hispanic	Hispanic	Asian or Pacific Islander	American Indian or Alaskan Native
Augsburg College	Bachelor's or equivalent adjusted cohort	347	265	40	14	9	16	1
	4 year graduation	37.2%	40.0%	27.5%	21.4%	22.2%	37.5%	0.0%
	5 year graduation	52.2%	55.5%	40.0%	42.9%	22.2%	50.0%	0.0%
	6 year graduation	56.5%	59.2%	45.0%	42.9%	22.2%	56.3%	100.0%
Bethany Lutheran College	Bachelor's or equivalent adjusted cohort	88	83	3	2	1	0	0
	4 year graduation	71.6%	71.1%	66.7%	50.0%	100.0% na	na	na
	5 year graduation	78.4%	78.3%	66.7%	50.0%	100.0% na	na	na
	6 year graduation	78.4%	78.3%	66.7%	50.0%	100.0% na	na	na
Bethel University	Bachelor's or equivalent adjusted cohort	565	0	0	0	0	0	0
	4 year graduation	65.5%	*	*	*	*	*	*
	5 year graduation	74.0%	*	*	*	*	*	*
	6 year graduation	75.2%	*	*	*	*	*	*
Carleton College	Bachelor's or equivalent adjusted cohort	499	350	96	28	20	43	5
	4 year graduation	89.6%	92.3%	79.2%	64.3%	85.0%	86.0%	80.0%
	5 year graduation	92.4%	94.3%	85.4%	71.4%	90.0%	90.7%	100.0%
	6 year graduation	93.2%	94.9%	87.5%	75.0%	90.0%	93.0%	100.0%
College of Saint Benedict	Bachelor's or equivalent adjusted cohort	516	480	22	4	4	13	1
	4 year graduation	79.5%	79.6%	81.8%	100.0%	75.0%	84.6%	0.0%
	5 year graduation	83.5%	83.8%	81.8%	100.0%	75.0%	84.6%	0.0%
	6 year graduation	84.1%	84.4%	81.8%	100.0%	75.0%	84.6%	0.0%
St Catherine University	Bachelor's or equivalent adjusted cohort	315	222	60	23	9	26	2
	4 year graduation	37.1%	41.4%	26.7%	8.7%	33.3%	42.3%	0.0%
	5 year graduation	53.3%	58.6%	36.7%	17.4%	77.8%	42.3%	0.0%
	6 year graduation	57.8%	64.0%	38.3%	21.7%	77.8%	42.3%	0.0%
Concordia College at Moorhead	Bachelor's or equivalent adjusted cohort	748	0	0	0	0	0	0
	4 year graduation	59.9%	*	*	*	*	*	*
	5 year graduation	64.8%	*	*	*	*	*	*
	6 year graduation	65.1%	*	*	*	*	*	*
Concordia University-Saint Paul	Bachelor's or equivalent adjusted cohort	175	137	27	12	0	15	0
	4 year graduation	32.6%	32.8%	37.0%	16.7% na		53.3% na	
	5 year graduation	49.1%	52.6%	37.0%	16.7% na		53.3% na	
	6 year graduation	49.7%	53.3%	37.0%	16.7% na		53.3% na	
Gustavus Adolphus College	Bachelor's or equivalent adjusted cohort	645	601	37	3	7	26	1
	4 year graduation	80.8%	80.2%	86.5%	100.0%	85.7%	84.6%	100.0%
	5 year graduation	82.9%	82.4%	89.2%	100.0%	85.7%	88.5%	100.0%
	6 year graduation	82.9%	82.4%	89.2%	100.0%	85.7%	88.5%	100.0%
Hamline University	Bachelor's or equivalent adjusted cohort	413	342	50	10	10	29	1
	4 year graduation	64.6%	66.1%	56.0%	30.0%	30.0%	72.4%	100.0%
	5 year graduation	70.0%	71.6%	60.0%	40.0%	30.0%	75.9%	100.0%
	6 year graduation	71.4%	72.8%	64.0%	40.0%	30.0%	82.8%	100.0%
Macalester College	Bachelor's or equivalent adjusted cohort	440	310	61	10	16	27	8
	4 year graduation	84.1%	85.5%	75.4%	80.0%	62.5%	88.9%	50.0%
	5 year graduation	87.0%	87.7%	80.3%	80.0%	75.0%	88.9%	62.5%
	6 year graduation	87.3%	88.1%	80.3%	80.0%	75.0%	88.9%	62.5%
Minneapolis College of Art and Design	Bachelor's or equivalent adjusted cohort	123	86	10	3	3	3	1
	4 year graduation	52.8%	53.5%	60.0%	66.7%	66.7%	33.3%	100.0%
	5 year graduation	58.5%	57.0%	70.0%	100.0%	66.7%	33.3%	100.0%
	6 year graduation	58.5%	57.0%	70.0%	100.0%	66.7%	33.3%	100.0%
Saint Johns University	Bachelor's or equivalent adjusted cohort	468	435	21	4	6	9	2
	4 year graduation	72.6%	74.0%	47.6%	50.0%	66.7%	33.3%	50.0%
	5 year graduation	79.7%	80.7%	61.9%	50.0%	100.0%	44.4%	50.0%
	6 year graduation	82.7%	83.7%	66.7%	50.0%	100.0%	55.6%	50.0%
Saint Mary's University of Minnesota	Bachelor's or equivalent adjusted cohort	396	344	16	3	7	5	1
	4 year graduation	45.2%	48.3%	18.8%	0.0%	14.3%	20.0%	100.0%
	5 year graduation	55.3%	58.4%	37.5%	66.7%	28.6%	20.0%	100.0%
	6 year graduation	56.6%	59.9%	37.5%	66.7%	28.6%	20.0%	100.0%
St. Olaf College	Bachelor's or equivalent adjusted cohort	777	689	58	13	11	33	1
	4 year graduation	83.0%	84.2%	70.7%	38.5%	100.0%	72.7%	100.0%
	5 year graduation	86.0%	86.8%	77.6%	46.2%	100.0%	81.8%	100.0%
	6 year graduation	86.5%	87.2%	79.3%	46.2%	100.0%	84.8%	100.0%
The College of Saint Scholastica	Bachelor's or equivalent adjusted cohort	382	348	20	2	6	9	3
	4 year graduation	57.1%	58.0%	45.0%	0.0%	66.7%	55.6%	0.0%
	5 year graduation	64.4%	64.9%	50.0%	0.0%	66.7%	66.7%	0.0%
	6 year graduation	66.5%	67.2%	50.0%	0.0%	66.7%	66.7%	0.0%
University of St Thomas	Bachelor's or equivalent adjusted cohort	1,095	992	98	20	18	55	5
	4 year graduation	57.4%	59.1%	39.8%	35.0%	27.8%	47.3%	20.0%
	5 year graduation	71.4%	72.3%	62.2%	55.0%	50.0%	69.1%	60.0%
	6 year graduation	72.3%	73.2%	63.3%	55.0%	50.0%	70.9%	60.0%

Minnesota's Private Colleges (MPCC)

	Institution	Cohort	Grand Total	All Students of Color			Race/ethnicity				
				White, non-Hispanic	Black, non-Hispanic	Hispanic	Asian or Pacific Islander	American Indian or Alaskan Native			
Minnesota State Universities	Bemidji State University	Bachelor's or equivalent adjusted cohort	584	537	31	6	4	3	18		
		4 year graduation	19.5%	20.7%	6.5%	0.0%	0.0%	33.3%	5.6%		
		5 year graduation	39.7%	42.1%	9.7%	0.0%	0.0%	33.3%	11.1%		
		6 year graduation	45.9%	48.4%	9.7%	0.0%	0.0%	33.3%	11.1%		
	Metropolitan State University	Bachelor's or equivalent adjusted cohort	55	22	23	6	0	15	2		
		4 year graduation	5.5%	9.1%	4.3%	0.0% na		6.7%	0.0%		
		5 year graduation	10.9%	18.2%	8.7%	0.0% na		13.3%	0.0%		
		6 year graduation	20.0%	31.8%	13.0%	0.0% na		20.0%	0.0%		
	Minnesota State University-Mankato	Bachelor's or equivalent adjusted cohort	2,050	1,514	97	36	12	43	6		
		4 year graduation	18.3%	16.8%	10.3%	8.3%	8.3%	14.0%	0.0%		
		5 year graduation	45.8%	47.0%	42.3%	36.1%	41.7%	48.8%	33.3%		
		6 year graduation	51.2%	52.8%	47.4%	41.7%	41.7%	53.5%	50.0%		
	Minnesota State University-Moorhead	Bachelor's or equivalent adjusted cohort	1,246	826	42	14	13	4	11		
		4 year graduation	17.5%	18.3%	4.8%	0.0%	0.0%	50.0%	0.0%		
		5 year graduation	34.9%	36.8%	19.0%	7.1%	15.4%	75.0%	18.2%		
		6 year graduation	40.0%	42.5%	21.4%	7.1%	23.1%	75.0%	18.2%		
	Saint Cloud State University	Bachelor's or equivalent adjusted cohort	2,151	1,568	123	31	14	57	21		
		4 year graduation	19.3%	20.5%	13.0%	9.7%	28.6%	12.3%	9.5%		
		5 year graduation	41.2%	43.7%	35.8%	41.9%	64.3%	31.6%	19.0%		
		6 year graduation	48.7%	51.1%	42.3%	51.6%	64.3%	40.4%	19.0%		
	Southwest Minnesota State University	Bachelor's or equivalent adjusted cohort	476	379	39	23	8	6	2		
		4 year graduation	20.0%	22.7%	5.1%	4.3%	12.5%	0.0%	0.0%		
		5 year graduation	34.7%	39.3%	15.4%	13.0%	37.5%	0.0%	0.0%		
		6 year graduation	40.1%	45.4%	17.9%	17.4%	37.5%	0.0%	0.0%		
Winona State University	Bachelor's or equivalent adjusted cohort	1,517	847	23	8	4	10	1			
	4 year graduation	24.9%	25.4%	4.3%	0.0%	0.0%	10.0%	0.0%			
	5 year graduation	50.2%	49.4%	17.4%	25.0%	0.0%	20.0%	0.0%			
	6 year graduation	55.3%	55.0%	26.1%	37.5%	0.0%	30.0%	0.0%			
University of Minnesota	University of Minnesota-Crookston	Bachelor's or equivalent adjusted cohort	243	219	12	5	3	3	1		
		4 year graduation	21.4%	21.9%	25.0%	20.0%	33.3%	33.3%	0.0%		
		5 year graduation	33.7%	34.7%	33.3%	20.0%	33.3%	66.7%	0.0%		
		6 year graduation	36.2%	37.4%	33.3%	20.0%	33.3%	66.7%	0.0%		
	University of Minnesota-Duluth	Bachelor's or equivalent adjusted cohort	2,025	1,870	127	32	17	66	12		
		4 year graduation	23.5%	23.6%	20.5%	15.6%	17.6%	22.7%	25.0%		
		5 year graduation	45.8%	46.2%	37.8%	28.1%	35.3%	42.4%	41.7%		
		6 year graduation	50.1%	50.5%	41.7%	37.5%	41.2%	42.4%	50.0%		
	University of Minnesota-Morris	Bachelor's or equivalent adjusted cohort	475	404	60	13	9	11	27		
		4 year graduation	46.1%	49.5%	23.3%	30.8%	33.3%	27.3%	14.8%		
		5 year graduation	60.0%	62.6%	43.3%	53.8%	33.3%	45.5%	40.7%		
		6 year graduation	62.9%	65.6%	46.7%	53.8%	33.3%	45.5%	48.1%		
University of Minnesota-Twin Cities	Bachelor's or equivalent adjusted cohort	5,162	4,109	950	241	119	549	41			
	4 year graduation	41.0%	44.1%	28.2%	21.2%	26.9%	32.2%	19.5%			
	5 year graduation	60.6%	63.6%	48.1%	37.3%	51.3%	53.7%	26.8%			
	6 year graduation	65.7%	68.3%	54.6%	44.0%	58.0%	60.7%	26.8%			
Other Private Not-For-Profit Colleges	Apostolic Bible Institute Inc	Bachelor's or equivalent adjusted cohort	11	8	2	0	2	0	0		
		4 year graduation	9.1%	12.5%	0.0% na	na	0.0% na	na	na		
		5 year graduation	18.2%	25.0%	0.0% na	na	0.0% na	na	na		
		6 year graduation	18.2%	25.0%	0.0% na	na	0.0% na	na	na		
	Crossroads College	Bachelor's or equivalent adjusted cohort	26	25	1	1	0	0	0		
		4 year graduation	11.5%	8.0%	100.0%	100.0% na	na	na	na		
		5 year graduation	30.8%	28.0%	100.0%	100.0% na	na	na	na		
		6 year graduation	30.8%	28.0%	100.0%	100.0% na	na	na	na		
	Crown College	Bachelor's or equivalent adjusted cohort	129	115	12	2	4	5	1		
		4 year graduation	35.7%	37.4%	25.0%	0.0%	75.0%	0.0%	0.0%		
		5 year graduation	46.5%	47.8%	41.7%	50.0%	100.0%	0.0%	0.0%		
		6 year graduation	52.7%	54.8%	41.7%	50.0%	100.0%	0.0%	0.0%		
	Martin Luther College	Bachelor's or equivalent adjusted cohort	241	233	7	2	1	2	2		
		4 year graduation	41.9%	42.1%	28.6%	50.0%	0.0%	0.0%	50.0%		
		5 year graduation	62.2%	62.7%	42.9%	50.0%	100.0%	0.0%	50.0%		
		6 year graduation	67.2%	67.8%	42.9%	50.0%	100.0%	0.0%	50.0%		
North Central University	Bachelor's or equivalent adjusted cohort	224	189	23	7	7	8	1			
	4 year graduation	14.3%	15.3%	4.3%	14.3%	0.0%	0.0%	0.0%			
	5 year graduation	33.0%	34.9%	21.7%	28.6%	14.3%	25.0%	0.0%			
	6 year graduation	37.1%	39.2%	21.7%	28.6%	14.3%	25.0%	0.0%			
Northwestern College	Bachelor's or equivalent adjusted cohort	430	409	20	2	2	13	3			
	4 year graduation	42.6%	43.0%	35.0%	0.0%	0.0%	46.2%	33.3%			
	5 year graduation	55.1%	55.7%	40.0%	0.0%	50.0%	46.2%	33.3%			
	6 year graduation	57.4%	57.9%	45.0%	0.0%	50.0%	53.8%	33.3%			
Oak Hills Christian College	Bachelor's or equivalent adjusted cohort	13	13	0	0	0	0	0			
	4 year graduation	23.1%	23.1% na	na	na	na	na	na			
	5 year graduation	23.1%	23.1% na	na	na	na	na	na			
	6 year graduation	30.8%	30.8% na	na	na	na	na	na			

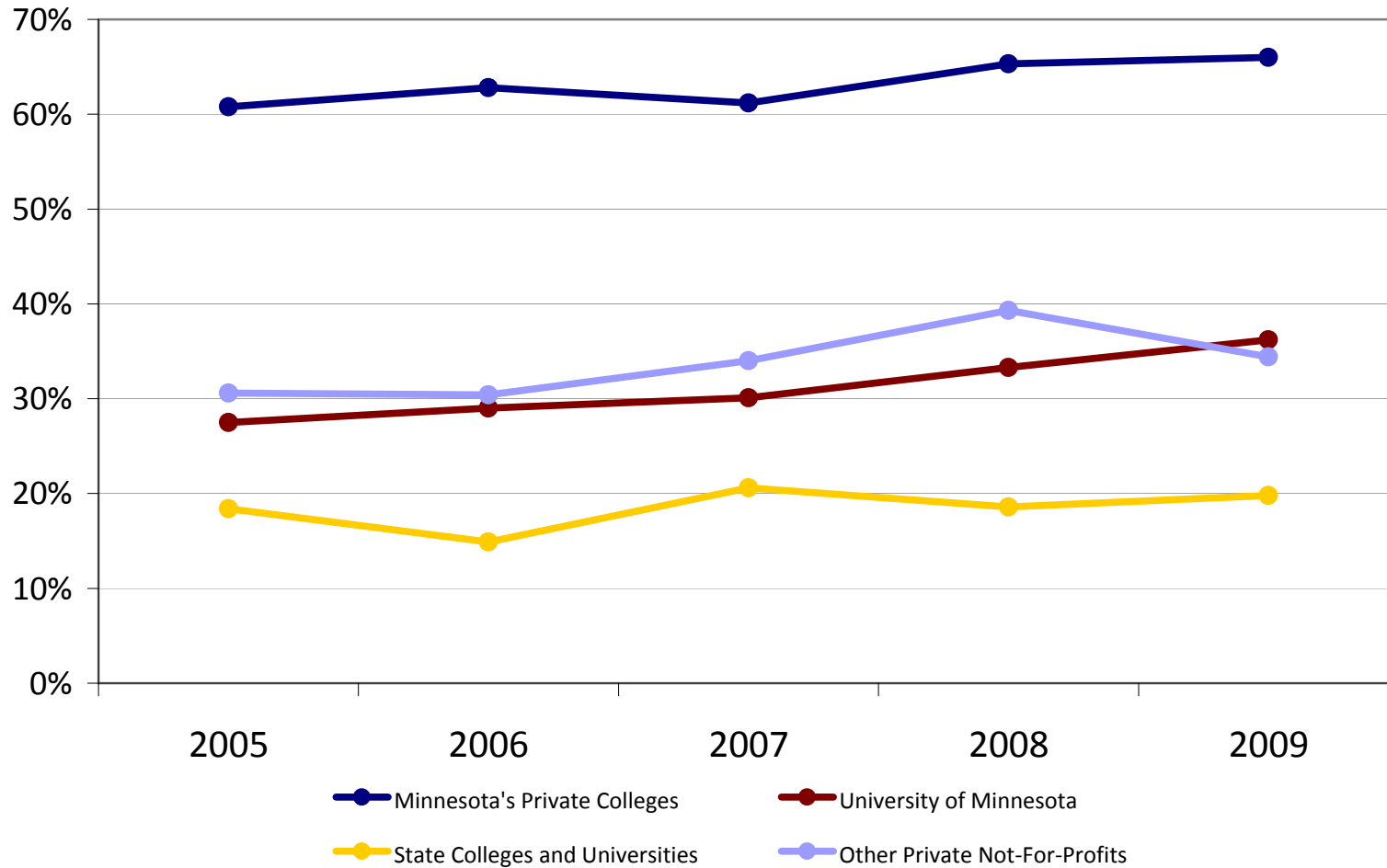
Minnesota For-Profit Colleges	Institution	Cohort	Grand Total	White, non-Hispanic	All Students of Color	Race/Ethnicity			
						Black, non-Hispanic	Hispanic	Asian or Pacific Islander	American Indian or Alaskan Native
	Academy College	Bachelor's or equivalent adjusted cohort	1	1	0	0	0	0	0
		4 year graduation	0.0%	0.0%	na	na	na	na	na
		5 year graduation	0.0%	0.0%	na	na	na	na	na
		6 year graduation	100.0%	100.0%	na	na	na	na	na
	The Art Institutes International Minnesota	Bachelor's or equivalent adjusted cohort	126	17	4	2	1	1	0
		4 year graduation	31.0%	35.3%	25.0%	0.0%	100.0%	0.0%	na
		5 year graduation	42.1%	47.1%	25.0%	0.0%	100.0%	0.0%	na
		6 year graduation	43.7%	47.1%	25.0%	0.0%	100.0%	0.0%	na
	Brown College	Bachelor's or equivalent adjusted cohort	3	0	0	0	0	0	0
		4 year graduation	100.0%	na	na	na	na	na	na
		5 year graduation	100.0%	na	na	na	na	na	na
		6 year graduation	100.0%	na	na	na	na	na	na
	Globe	Bachelor's or equivalent adjusted cohort	8	5	3	1	0	2	0
		4 year graduation	25.0%	40.0%	0.0%	0.0%	na	0.0%	na
		5 year graduation	37.5%	60.0%	0.0%	0.0%	na	0.0%	na
		6 year graduation	50.0%	60.0%	33.3%	0.0%	na	50.0%	na
	Minnesota School of Business - Brooklyn Center	Bachelor's or equivalent adjusted cohort	11	3	6	3	1	2	0
		4 year graduation	0.0%	0.0%	0.0%	0.0%	0.0%	0.0%	na
		5 year graduation	36.4%	100.0%	16.7%	33.3%	0.0%	0.0%	na
		6 year graduation	36.4%	100.0%	16.7%	33.3%	0.0%	0.0%	na
	National American University-Brooklyn Center	Bachelor's or equivalent adjusted cohort	12	5	3	3	0	0	0
		4 year graduation	0.0%	0.0%	0.0%	0.0%	na	na	na
		5 year graduation	8.3%	20.0%	0.0%	0.0%	na	na	na
		6 year graduation	8.3%	20.0%	0.0%	0.0%	na	na	na
	National American University-Roseville	Bachelor's or equivalent adjusted cohort	8	3	5	3	0	2	0
		4 year graduation	25.0%	33.3%	20.0%	33.3%	na	0.0%	na
		5 year graduation	25.0%	33.3%	20.0%	33.3%	na	0.0%	na
		6 year graduation	25.0%	33.3%	20.0%	33.3%	na	0.0%	na
	Minnesota School of Business	Bachelor's or equivalent adjusted cohort	13	9	3	1	1	1	0
		4 year graduation	23.1%	33.3%	0.0%	0.0%	0.0%	0.0%	na
		5 year graduation	23.1%	66.7%	0.0%	0.0%	0.0%	0.0%	na
		6 year graduation	23.1%	100.0%	0.0%	0.0%	0.0%	0.0%	na

Source: U.S. Department of Education, IPEDS 2002 Cohort

Analysis: Minnesota Private College Research Foundation, November 2009

\* Unable to calculate due to problems with IPEDS data collection.

# Graduation Rate Trends: Percent Graduating in Four Years by Sector



Source: U.S. Department of Education, IPEDS 1998 through 2002 Cohort.  
Analysis: Minnesota Private College Research Foundation, November 2009.